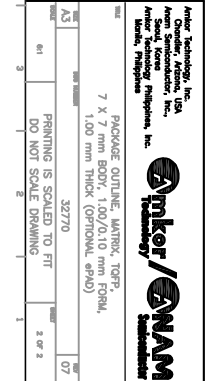


Amkor Technology, Inc.
 Chandler, Arizona, USA
 Amkor Technology (Singapore), Inc.
 Singapore
 Amkor Technology (Thailand), Inc.
 Bangkok, Thailand
 Amkor Technology (Vietnam), Inc.
 Hanoi, Vietnam

PACKAGE OUTLINE: VANTOX, TOPP,
 7 X 7 mm BODY, 100/0.10 mm FORM,
 1.00 mm THICK (OPTIONAL, 0.75)

PRINTING IS SCALED TO FIT
 DO NOT SCALE DRAWING

32770 2 of 2



THE INFORMATION AND DIMENSIONS CONTAINED HEREIN ARE THE PROPERTY OF AMKOR TECHNOLOGY, INC. AND AMKOR/ANAM. NO PART OF THIS DOCUMENT IS TO BE REPRODUCED OR TRANSMITTED IN ANY FORM OR BY ANY MEANS, ELECTRONIC OR MECHANICAL, INCLUDING PHOTOCOPYING, RECORDING, OR BY ANY INFORMATION STORAGE AND RETRIEVAL SYSTEM, WITHOUT THE WRITTEN PERMISSION OF AMKOR/ANAM.

JEDEC VARIATION 'ALL DIMENSIONS IN MILLIMETERS			
Y	X	Z	W
A	MIN.	NDM.	MAX.
A1	0.05	0.15	1.20
A2	0.95	1.00	1.05
D	9.00 BSC.		4
D1	7.00 BSC.		7.8
D2	9.00 BSC.		4
E1	7.00 BSC.		4
E2	0.60	0.75	7.8
N	32		
S	0.80 BSC.		9
S1	0.30	0.37	0.45
S2	0.30	0.33	0.40
CCC	0.30	0.33	0.40
DDD	0.20	0.20	0.20

JEDEC VARIATION 'ALL DIMENSIONS IN MILLIMETERS			
Y	X	Z	W
A	MIN.	NDM.	MAX.
A1	0.05	0.15	1.20
A2	0.95	1.00	1.05
D	9.00 BSC.		4
D1	7.00 BSC.		7.8
D2	9.00 BSC.		4
E1	7.00 BSC.		4
E2	0.60	0.75	7.8
N	48		
S	0.5 BSC.		9
S1	0.17	0.22	0.27
S2	0.17	0.20	0.23
CCC	0.17	0.20	0.23
DDD	0.08	0.08	0.08

JEDEC VARIATION 'ALL DIMENSIONS IN MILLIMETERS			
Y	X	Z	W
A	MIN.	NDM.	MAX.
A1	0.05	0.15	1.20
A2	0.95	1.00	1.05
D	9.00 BSC.		4
D1	7.00 BSC.		7.8
D2	9.00 BSC.		4
E1	7.00 BSC.		4
E2	0.60	0.75	7.8
N	64		
S	0.4 BSC.		9
S1	0.13	0.19	0.23
S2	0.13	0.16	0.19
CCC	0.13	0.16	0.19
DDD	0.07	0.07	0.07

NOTES:

- ALL DIMENSIONING AND TOLERANCING CONFORM TO ANSI Y14.5-1992.
- DATUM PLANE [C] LOCATED AT MOLD PARTING LINE AND CONCURRENT WITH LEAD WHERE LEAD EXITS PLASTIC BODY AT BOTTOM OF PARTING LINE.
- DATUMS [B] AND [D] TO BE DETERMINED AT CENTERLINE BETWEEN LEADS WHERE LEADS EXIT PLASTIC BODY AT DATUM PLANE [C].
- LEADS TO BE DETERMINED AT SEATING PLANE [E].
- DIMENSIONS D1 AND D2 DO NOT INCLUDE MOLD PROTRUSION.
- DIMENSIONS D1 AND D2 DO NOT INCLUDE MOLD PROTRUSION.
- W IS THE TOTAL NUMBER OF TERMINALS.
- THESE DIMENSIONS TO BE DETERMINED AT DATUM PLANE [C].
- MAXIMUM DIMENSIONS ARE SPECIFIED FROM THE BOTTOM OF PACKAGE B, AND TOP OF PACKAGE WILL NOT EXCEED BOTTOM OF PACKAGE.

- DIMENSION B DOES NOT INCLUDE DAMBAR PROTRUSION.
- ALLOWABLE DAMBAR PROTRUSION SHALL BE 0.05mm TOTAL.
- IF DAMBAR PROTRUSION IS PRESENT, THE TOTAL DAMBAR PROTRUSION SHALL BE 0.05mm TOTAL.
- CONDITION DAMBAR CANNOT BE LOCATED ON THE COVER RADIUS OR THE FOOT.
- CONTROLLING DIMENSION MILLIMETER.
- MAXIMUM ALLOWABLE DIE THICKNESS TO BE ASSEMBLED IN THIS PACKAGE IS 0.28 MILLIMETERS.
- THIS LINE COORDINATES VARIATION ABA AND ABB RESTRICTION IS 0.28 MILLIMETERS.
- AT IS DEFINED AS THE DISTANCE FROM THE SEATING PLANE TO THE LOWEST POINT OF THE PACKAGE BODY.
- DIMENSION D2 AND E2 REPRESENT THE SIZE OF THE EXPOSED PAD, AND IS DEPENDENT ON THE DIE SIZE.
- EXPOSED PAD SHALL BE COPLANAR WITH BOTTOM OF PACKAGE WITHIN 0.05.
- CORNER CHAMFER OF EXPOSED DIE PAD SHALL BE WITHIN 0.30 MM.