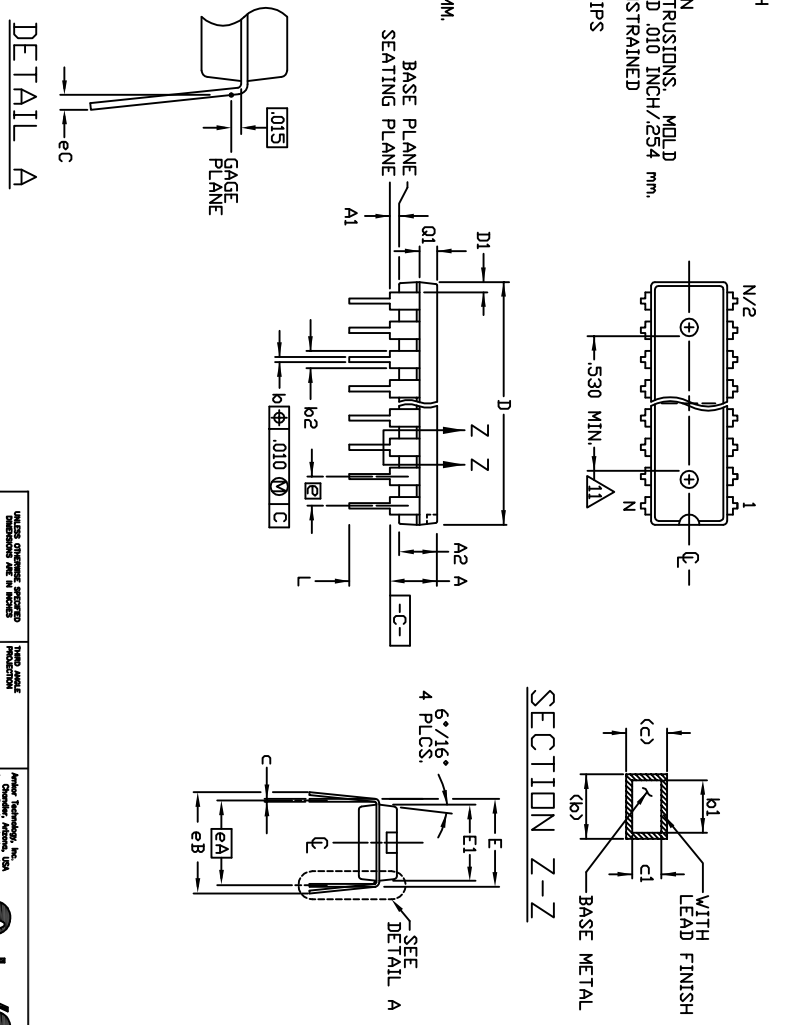


NO.	DESCRIPTION	DATE	BY	CHKD.	APPROVED
01	INITIAL RELEASE	1982	JK	YK	
02	INC. PER DEN 082972	1982	JK	HJC	
03	INC. PER DEN 082903	1982	JK	HJC	
04	REVISED PER DEN 082903	1982	JK	EM	
05	CORRECTED "V" DIM. PER DEN 082978	1982	JK	ALB	

- NOTES:
1. CONTROLLING DIMENSION: INCH.
 2. DIMENSIONING AND TOLERANCING PER ANSI Y14.5M-1982.
 3. DISTANCE BETWEEN LEADS INCLUDING DAMBAR PROTRUSIONS TO BE .005/0.127MM MINIMUM.
 4. DIMENSIONS A, A1 & L ARE MEASURED WITH THE PACKAGE SEATED IN JEDEC SEATING PLANE GAUGE GS-3.
 5. DIMENSIONS D, D1 AND E1 ARE TO BE MEASURED AT MAXIMUM MATERIAL CONDITION BUT DO NOT INCLUDE MOLD FLASH OR PROTRUSIONS. MOLD FLASH OR PROTRUSIONS SHALL NOT EXCEED .010 INCH/.254 mm.
 6. E AND eA MEASURED WITH THE LEADS TO BE PERPENDICULAR TO DATUM [C].
 7. eB AND eC ARE MEASURED AT THE LEAD TIPS WITH THE LEADS UNCONSTRAINED.
 8. N IS THE MAXIMUM NUMBER OF LEAD POSITIONS.
 9. THIS DRAWING COMPLIANT TO JEDEC STANDARD MS-001, VARIATION AD.
- △ TOP EJECTOR PINS MAY BE PRESENT ON A&P2 PARTS.
- △ INCLUDE DAMBAR PROTRUSIONS. DAMBAR PROTRUSIONS SHALL NOT EXCEED .010/0.25MM.

INCHES		MM	
MIN.	NOM.	MAX.	TOL.
A	.015	.210	4
A1	.115	.195	4
A2	.115	.130	.195
b	.015	.018	.022
b1	.014	.018	.020
b2	.055	.060	.065
C	.008	.010	.012
C1	.008	.010	.011
D	1.025	1.030	1.035
D1	.030	.035	.040
E	.300	.325	.325
E1	.240	.252	.260
e	.100	BSC	5
eA	.300	BSC	6
eB	.430		7
eC	.060		7
L	.125	.135	4
N	20		8
Q1	.055	.060	.065



UNLESS OTHERWISE SPECIFIED DIMENSIONS ARE IN INCHES

DATE: 1982

DESIGNER: JK & JOT

ANALYST: JT

THIRD ANGLE PROJECTION

APPROVALS:

DATE	BY	CHKD.	APPROVED
1982	JK	YK	
1982	JK	HJC	
1982	JK	EM	
1982	JK	ALB	

PACKAGE OUTLINE, 20 LEAD, P-DIP, .300 INCH

00293

3/1

1 OF 1

