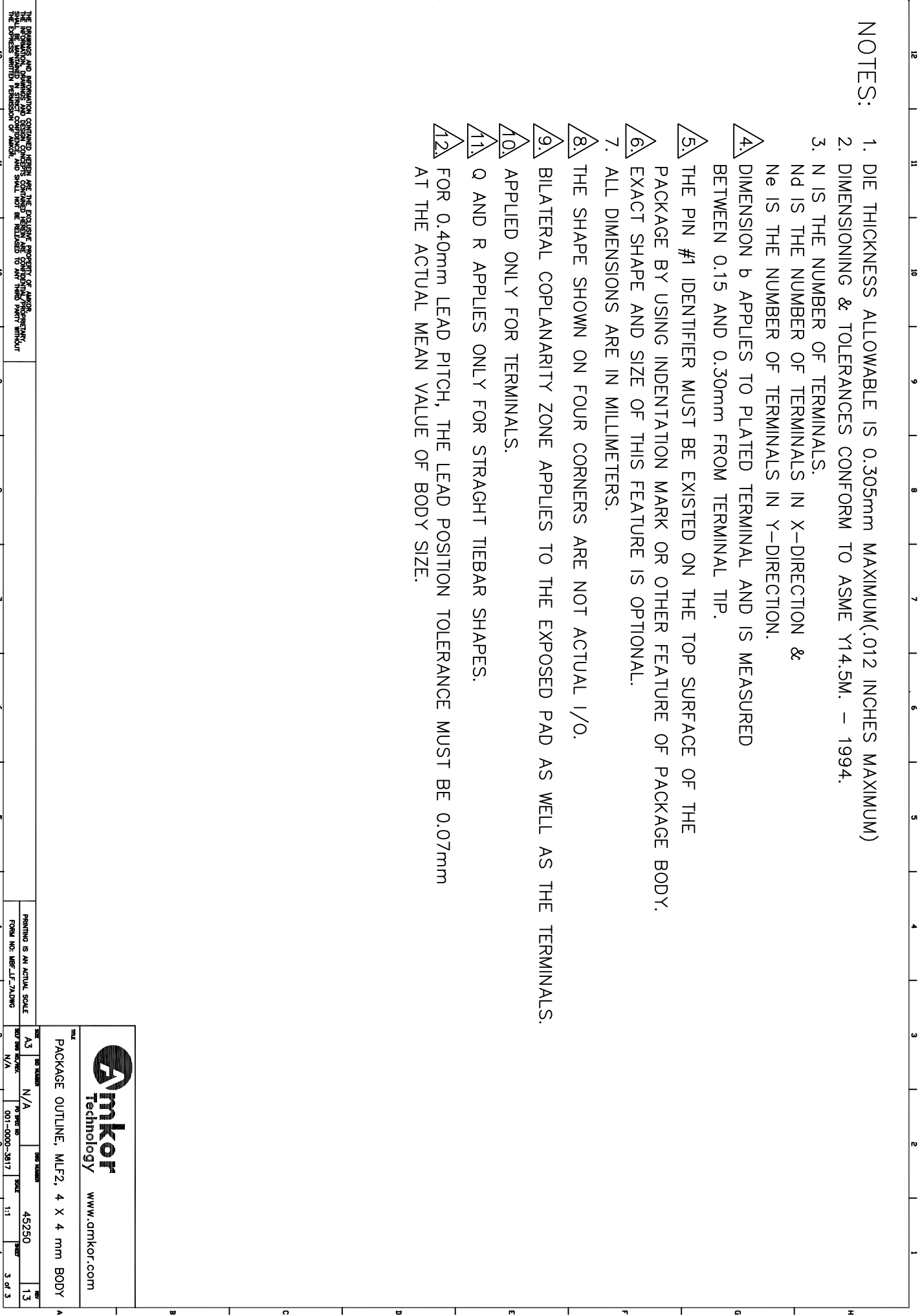


NOTES:

1. DIE THICKNESS ALLOWABLE IS 0.305mm MAXIMUM(.012 INCHES MAXIMUM)
2. DIMENSIONING & TOLERANCES CONFORM TO ASME Y14.5M. – 1994.
3. N IS THE NUMBER OF TERMINALS.
- ND IS THE NUMBER OF TERMINALS IN X-DIRECTION &
Ne IS THE NUMBER OF TERMINALS IN Y-DIRECTION.
4. DIMENSION b APPLIES TO PLATED TERMINAL AND IS MEASURED BETWEEN 0.15 AND 0.30mm FROM TERMINAL TIP.
5. THE PIN #1 IDENTIFIER MUST BE EXISTED ON THE TOP SURFACE OF THE PACKAGE BY USING INDENTATION MARK OR OTHER FEATURE OF PACKAGE BODY.
6. EXACT SHAPE AND SIZE OF THIS FEATURE IS OPTIONAL.
7. ALL DIMENSIONS ARE IN MILLIMETERS.
8. THE SHAPE SHOWN ON FOUR CORNERS ARE NOT ACTUAL I/O.
9. BILATERAL COPLANARITY ZONE APPLIES TO THE EXPOSED PAD AS WELL AS THE TERMINALS.
10. APPLIED ONLY FOR TERMINALS.
11. Q AND R APPLIES ONLY FOR STRAGHT TIEBAR SHAPES.
12. FOR 0.40mm LEAD PITCH, THE LEAD POSITION TOLERANCE MUST BE 0.07mm AT THE ACTUAL MEAN VALUE OF BODY SIZE.



THE DIMENSIONS AND INFORMATION CONTAINED HEREIN ARE THE EXCLUSIVE PROPERTY OF AMKOR TECHNOLOGY. ALL DIMENSIONS AND TOLERANCES CONTAINED HEREIN ARE CONSIDERED APPROXIMATE UNLESS OTHERWISE SPECIFIED. THE INFORMATION CONTAINED HEREIN IS NOT TO BE RELEASED TO ANY THIRD PARTY WITHOUT THE EXPRESS WRITTEN PERMISSION OF AMKOR.



www.amkor.com

PACKAGE OUTLINE, MLF2, 4 X 4 mm BODY

SIZE	DR NUMBER	DR NUMBER	DR NUMBER	SCALE	DATE	REV
A3	N/A	N/A	001-0000-3817	45250	1:1	13
FORM NO.	DR NUMBER	DR NUMBER	DR NUMBER	DR NUMBER	DR NUMBER	DR NUMBER
MLF2	N/A	N/A	001-0000-3817	45250	1:1	13

PRINTING IS AN ACTUAL SCALE
FORM NO. MFB_LT_7JLWIG